



HIGH-GRADE GOLD IN COLOMBIA

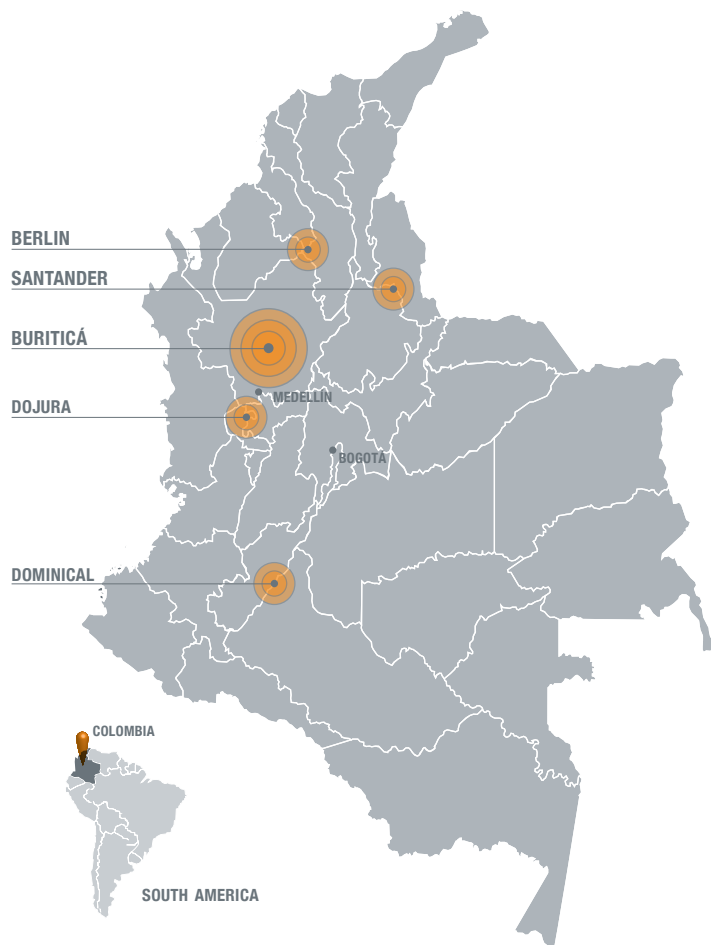
CORPORATE STRUCTURE

Shares Outstanding:	107.7 million
Warrants:	8.6 million
Options:	7.3 million
Fully Diluted	123.6 million
Cash position:	USD\$ 88.0 million

(as at September 30, 2011)

INVESTMENT HIGHLIGHTS

Extensive portfolio of 100%-owned precious metals projects in Colombia
Buriticá is a multimillion ounce gold, silver and zinc deposit and growing
Recent drill results from Buriticá include 14.3 m at 446 g/t gold and 166 g/t silver
Aggressive exploration program in 2012: 60,000-metre drill program
Highly prospective Berlin project produced over 400,000 ounces of gold in the 1930s-1940s with a grade of 16 g/t and historical recoveries of 94%
Seasoned management team in Toronto and highly-qualified technical team in Colombia



ABOUT CONTINENTAL GOLD

Continental Gold Limited (Continental) (TSX:CNL) is an advanced-stage exploration and development company with an extensive portfolio of gold projects in Colombia. Spearheaded by a management team with over 40 years of exploration and mining experience in South America, the Company is focused on advancing Buriticá, its 100%-owned, high-grade gold project, towards production. Maiden resource estimates for two major vein systems at the project were recently announced with combined measured and indicated resources of 630,000 ounces of gold at 17.8 g/t, 1,500,000 ounces of silver at 42 g/t and 18,700,000 pounds of zinc at 0.8% as well as combined inferred resources of 2,500,000 ounces of gold at 11.4 g/t, 9,500,000 ounces of silver at 43 g/t and 88,000,000 pounds of zinc at 0.6%. With the aim to be the first modern day gold producer in Colombia, Continental continues in 2012 with a 60,000-metre drill program at Buriticá to further delineate the resource and drill new target zones identified within its concessions.

Continental Gold Projects

Buriticá

- High-grade base metal-carbonate style gold vein/breccia system
- 29,329-hectare project located 75 km northwest of Medellín, in the Antioquia Department
- Excellent infrastructure: road access, power and communications at site
- Initiating the construction of a 5.5 km ramp in Q2 2012
- Over 95,000 m of drilling completed to date

Dominical

- 24,327-hectare gold project located in the Cauca Department
- 4,000 m of diamond drilling planned for H1 2012

Dojura

- 44,893-hectare gold/copper project located in the Choco Department
- Joint venture with AngloGold Ashanti Limited

Berlin

- 26,588-hectare project with mesothermal gold veins along 11 km strike length and over 1,500 vertical metres
- Maximum elevation is 2,200 m
- Historical production of over 400,000 ounces of gold at 16 g/t
- 10,000 m of diamond drilling planned for H1 2012

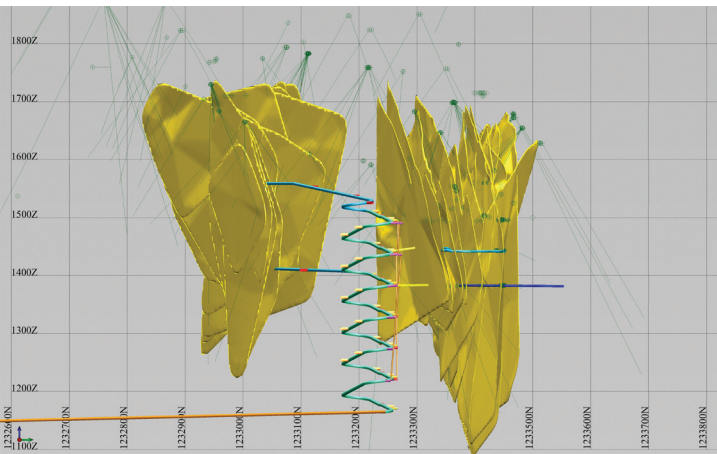
Santander

- 5,979-hectare gold project located in the California-Vetas district

Buriticá Gold Project

Buriticá, Continental's 100%-owned flagship project, is a multimillion ounce gold, silver and zinc deposit located 75 km northwest of Medellín in the Antioquia Department of Colombia. The project is accessible by paved road with power and water readily available on site.

Buriticá is a base metal-carbonate style gold vein/breccia system that has yielded two high-grade zones to date: the Yaragua System and the Veta Sur System. In addition, numerous targets have been identified through extensive soil geochemistry surveys in a 1.5 km by 2.5 km area in close



Multiple veins in Yaragua and Veta Sur Zone

Buriticá – NI 43-101 Compliant Resource Estimates

COMBINED YARAGUA AND VETA SUR RESOURCES							
RESOURCE		GRADES			METAL		
Category	Tonnes	Au (g/t)	Ag (g/t)	Zn (%)	Au (oz)	Ag (oz)	Zn (lb)
Measured	40,000	55.1	138	2.4	70,000	200,000	2,100,000
Indicated	1,070,000	16.4	39	0.7	560,000	1,300,000	16,600,000
Total M&I	1,110,000	17.8	42	0.8	630,000	1,500,000	18,700,000
Inferred	6,900,000	11.4	43	0.6	2,500,000	9,500,000	88,000,000

- The resource has a less than 5% variance when estimated using kriging versus nearest neighbour or inverse distance squared
- Calculations are based on 54,200 m of drilling and 1,600 metres of channel samplings as at June 30, 2011
- Average domains used in resource model versus dimensions drill-tested to date (strike length x vertical metres):
 - Yaragua – 400m x 300m vs. 600m x 600m
 - Veta Sur – 250m x 300m vs. 550m x 1180m
 - Both systems remain open along strike and at depth
- Over 40,000 m of drilling has been completed since the resource cut-off date

*Estimates prepared by Mining Associates Pty Ltd.

*Kriging estimation method capped at -97.5 percentile; 3 g/t gold cut-off, 1 m minimum diluted width

*There have been no assumptions made as to metal prices and recoveries in this resource estimate

proximity to the Veta Sur and Yaragua Systems. Since the first discovery drill hole in late 2007, Continental has completed over 95,000 m of diamond drilling, including over 15,000 m of underground development.

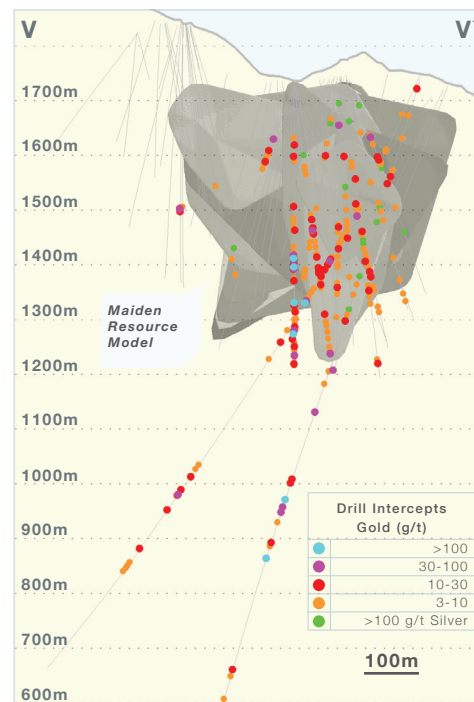
The Veta Sur and Yaragua Systems have strike lengths and vertical extents of up to 600 m and 1180 m. Both systems remain open laterally and at depth.

Select drill results from the Veta Sur and Yaragua zones include:

Target	Drill Hole	Interval (m)	Gold (g/t)	Silver (g/t)
Veta Sur	Busy-79	14.3	446.0	166.0
	Busy-68	4.7	85.5	71.0
	Busy-130	9.9	53.11	109.9
	Busy-131	17.9	113.82	112.0
	Busy-221*	10.2	83.8	285
Yaragua	Busy-11	7.0	88.29	155.2
	Buuy-48	3.5	76.72	216.4

* Busy-221 intersected high-grade gold and silver mineralization to 1180 vertical metres.

The long intercepts from 830.5 m downhole (10.2 m @ 83.8 g/t gold, 285 g/t silver) is 250 m deeper than any previously announced Veta Sur major drill intercepts.



Major intercepts post NI 43-101 compliant resource estimate
Buriticá: Drill Holes, Veta Sur Long Section

Management

Ari Sussman
Chief Executive Officer

Mark Moseley-Williams, BSc, MBA
President & Chief Operating Officer

Paul Begin, CA, MBA
Chief Financial Officer

Gustavo Koch, MA
Executive VP

Mauricio Castañeda, EIA
VP, Exploration

Chris Grainger, PhD
VP, Exploration - Regional

Advisors

Vic Wall, PhD
Special Advisor

Greg Hall, BAppSc
Technical Advisor

Directors

Robert Allen
Chairman

Ari Sussman
Patrick Anderson
James Felton

Jaime I. Gutierrez
Paul Murphy
Timothy Warman



Mark Moseley-Williams is a qualified person in accordance with National Instrument 43-101 and has reviewed the content of this fact sheet. This fact sheet contains "Forward-looking Statements". Read our Forward-looking Statement online at www.continentalgold.com.

155 Wellington Street West, Suite 2920
Toronto, Ontario, Canada M5V 3H1

+1 416 583 5610
+1 416 595 9918

info@continentalgold.com
www.continentalgold.com

Updated: January 2012